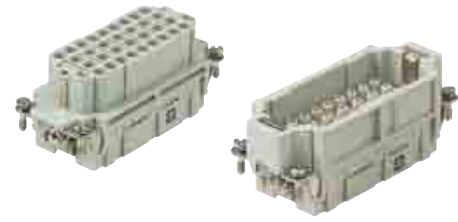

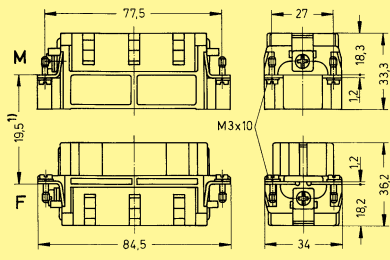
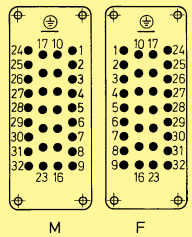
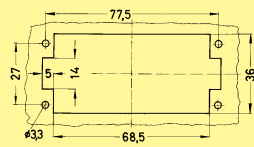


Number of contacts

32 +



Inserts

Identification	Series	Part number		Drawing	Dimensions in mm
		Male insert (M)	Female insert (F)		
<p>Crimp termination</p> <p>Order crimp contacts separately (see Technical characteristics on page 03.05)</p> 	Han® EE	09 32 032 3001	09 32 032 3101	 <p>1) Distance for contact max. 21 mm</p> <p>Contact arrangement view from termination side</p>  <p>Panel cut out</p> 	

Han
E/EE