

Han D 40 Pos. F Insert Term. Block Left

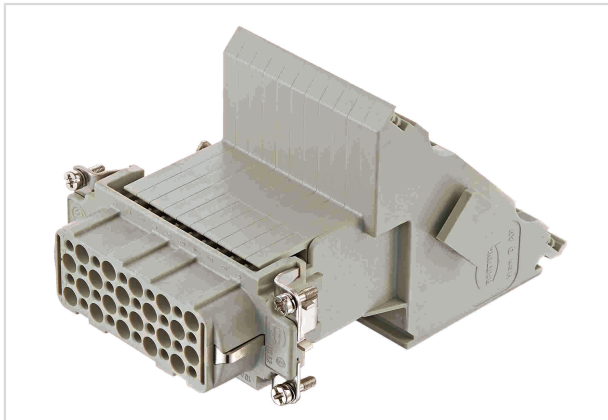


Image is for illustration purposes only. Please refer to product description.

| | |
|--------------------|---|
| Part number | 09 21 040 4701 |
| Specification | Han D 40 Pos. F Insert Term. Block Left |
| HARTING eCatalogue | https://b2b.harting.com/09210404701 |

Identification

| | |
|---------------|---|
| Category | Inserts |
| Series | Han D [®] AV |
| Element | Terminal block connector |
| Specification | Left hand version Multi contour (MK) |

Version

| | |
|--------------------|-------------------|
| Termination method | Screw termination |
| Gender | Female |
| Size | 16 B |
| Number of contacts | 40 |
| PE contact | Yes |

Technical characteristics

| | |
|--------------------------|-----------------------------|
| Conductor cross-section | 0.2 ... 2.5 mm ² |
| Rated current | 10 A |
| Rated voltage | 250 V |
| Rated impulse voltage | 4 kV |
| Pollution degree | 3 |
| Rated voltage acc. to UL | 600 V |
| Insulation resistance | >10 ¹⁰ Ω |
| Contact resistance | ≤4 mΩ |
| Tightening torque | 0.5 Nm |



Pushing Performance

Technical characteristics

| | |
|----------------------|-----------------|
| Limiting temperature | -40 ... +125 °C |
| Mating cycles | ≥500 |

Material properties

| | |
|---|------------------------|
| Material (insert) | Polycarbonate (PC) |
| Colour (insert) | RAL 7032 (pebble grey) |
| Material (contacts) | Copper alloy |
| Surface (contacts) | Silver plated |
| Material flammability class acc. to UL 94 | V-0 |
| RoHS | compliant |
| ELV status | compliant |
| China RoHS | e |
| REACH Annex XVII substances | No |
| REACH ANNEX XIV substances | No |
| REACH SVHC substances | No |

Specifications and approvals

| | |
|----------------|-------------------------|
| Specifications | EN 60664-1 IEC 61984 |
| Approvals | DNV GL |
| UL / CSA | UL 1977 ECBT2.E235076 |

Commercial data

| | |
|--------------------------------|---|
| Packaging size | 1 |
| Net weight | 401 g |
| Country of origin | Germany |
| European customs tariff number | 85366990 |
| eCl@ss | 27440205 Contact insert for industrial connectors |