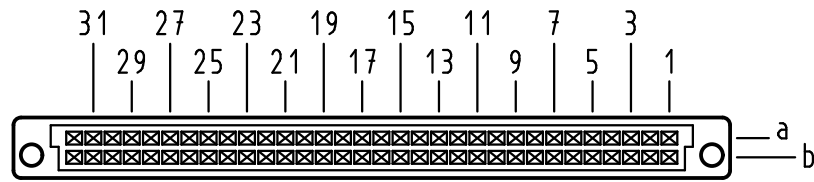


Alle Rechte vorbehalten/ All rights reserved

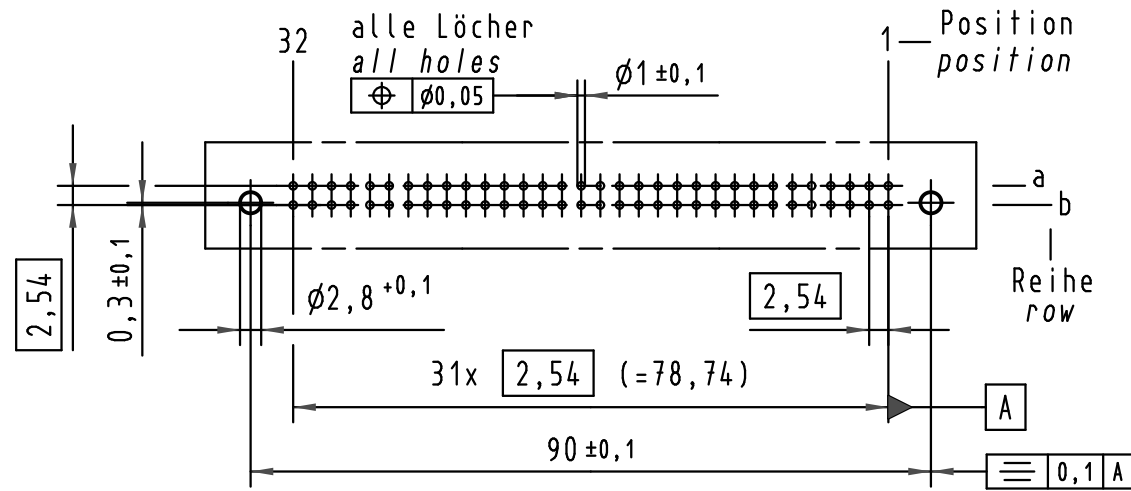
X
Kontaktanordnung
Contact arrangement



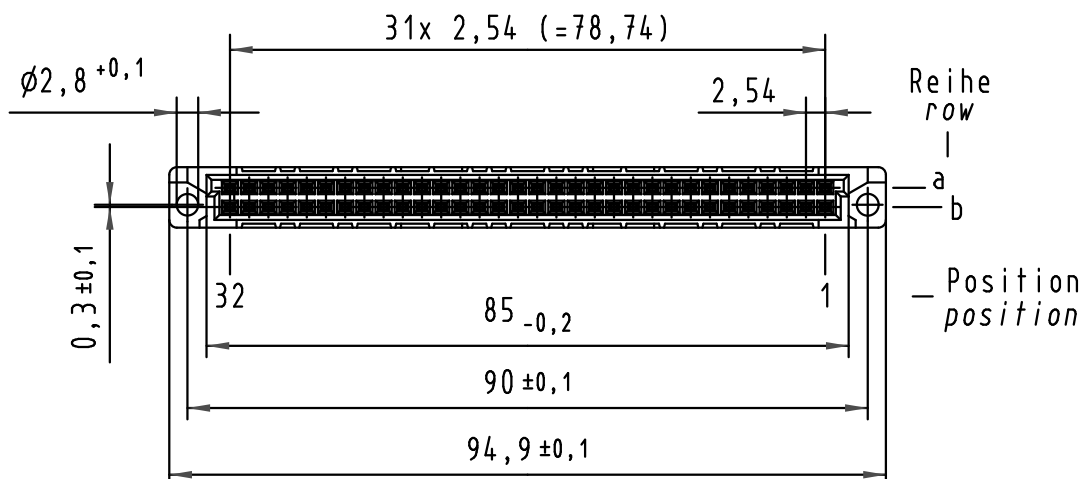
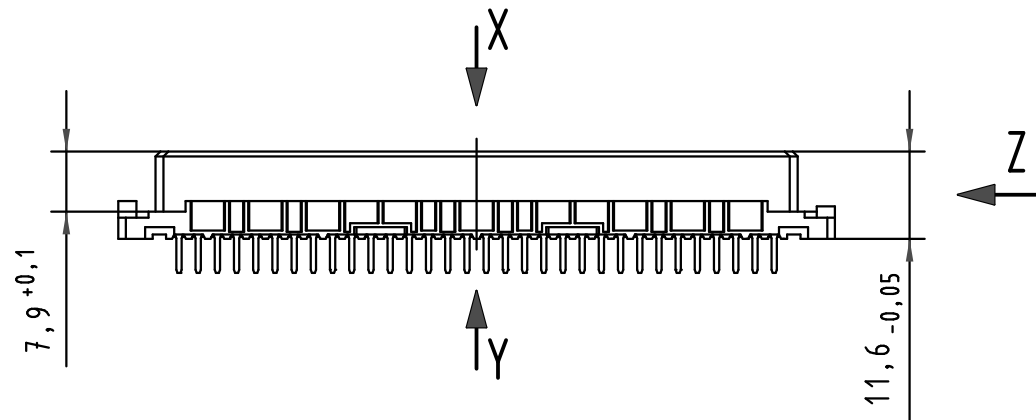
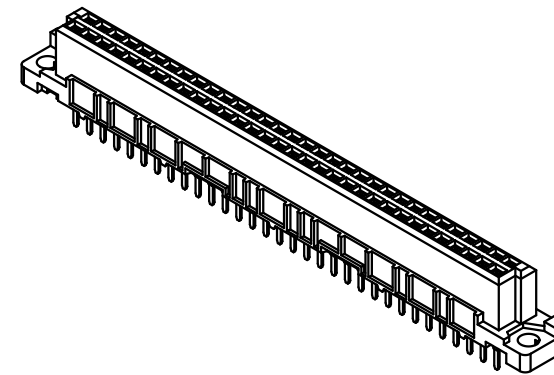
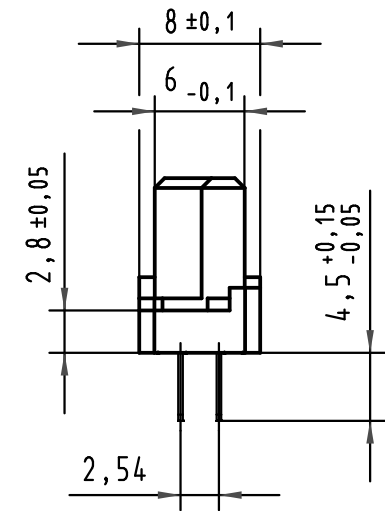
64 Einlöt-Kontakte
64 solder-contacts

- ☒ = Einlöt-Kontakt
= solder-contact
- = Kontaktposition nicht belegt
= position without contact

X
(Lochbild)
(Board drillings)

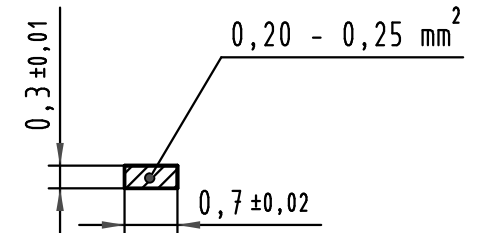


Z
2:1



Y
10:1

Querschnitt der
Lötanschlüsse:
cross-section of
solder terminations:



| | | |
|-------------------------|--|--------------------------------------|
| - | - | - |
| 09 02 264 6825 | 2 | Au über/over Ni |
| 09 02 264 2825 | 1 | Au über/over Ni |
| Bestell-Nr. part-no. | Anforderungsstufe nach IEC performance level acc.to IEC | Kontaktoberfläche contact plating |

| | | | | | | | | |
|---|----------|------|-----------------------------------|----------|------|---|-------------------|--|
| All Dimensions in mm Original Size DIN A 3 | | | Techn. Character. | | | Nicht tolerierte Maßel/Free size tolerances IEC 60603-2 | | |
| | | | | | | har-bus B Federleiste Einlöt 4,5 , 64 pol. har-bus B female connector solder 4,5 , 64 pol. | | |
| | | | Detail. | 12.10.99 | Rie. | Maßstab/Scale 1:1 2:1 | TB 09 02 264 x825 | |
| | | | Insp. | 12.10.99 | Pa. | | | |
| 34306 | 02.07.07 | LehT | Stand. | | | | Sub. | |
| 30231 | 08.02.02 | Rie. | | | | | | |
| 26962 | 24.01.00 | Rie. | HARTING Electronics GmbH & Co. KG | | | | Blatt/ page | |
| 26091 | | | D-32339 ESPELKAMP | | | | | |
| Mod. | Dat. | Name | | | | | | |