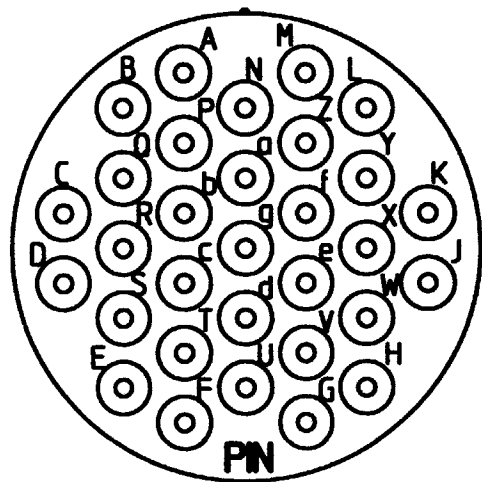


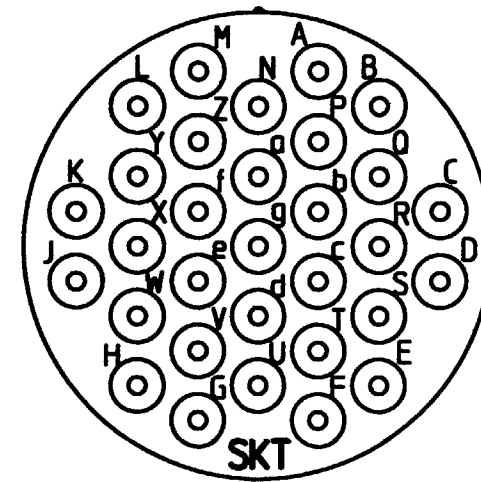
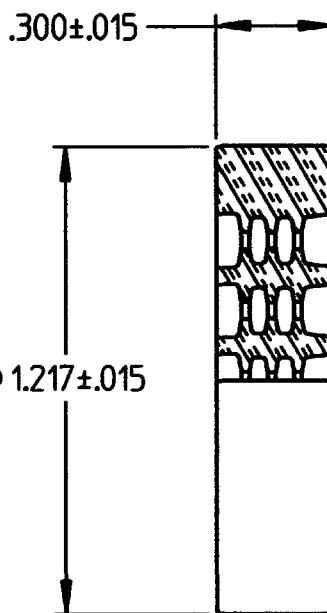
**PROPERTY OF DEUTSCH E.C.D.**  
 This drawing contains proprietary information that shall not be disclosed, duplicated,  
 nor used in whole or in part for any purpose other than to evaluate this drawing.

A 0810-201-2401

REVISIONS			
REV	DESCRIPTION	DATE	APPROVED
A	REVISED PER E.O. D1083	3/6/01	J.H.



GROMMET  
PIN SIDE



GROMMET  
SOCKET SIDE

5. ALLISON PART NUMBER WTA10-24-03 REF.
4. GROMMET IS USED WITH BOTH SIZE 24 FOLLOWERS FOR 19 MM AND 22 MM SPLIT CONVOLUTED TUBING.
3. GROMMET ARRANGEMENT IS 24-31 PER MIL-STD-1669.
2. MATERIAL: SILICONE ELASTOMER (RED).
1. ALL DIMENSIONS ARE IN INCHES UNLESS OTHERWISE SPECIFIED.

SIGNATURE & DATE	
DR	R. GROSS 11-1-94
CHK	JP 11-9-94
PE	R. Doss 11-1-94
APPD	ASD
SCALE	NONE
WT	1

**SECONDARY GROMMET**

ALLISON WTA10-24-00  
 BACKSHELL SYSTEM  
 SIZE 24  
 31 SIZE 16 CAVITIES

ENVELOPE

CP	MATL CODE
<b>DEUTSCH</b> ENGINEERED CONNECTING DEVICES	
5733 W. Whittier Ave. Hemet, California	
<b>A</b>	0810-201-2401
SIZE	CODE
	SHEET 1 OF 1

0810-201-2401.dwg