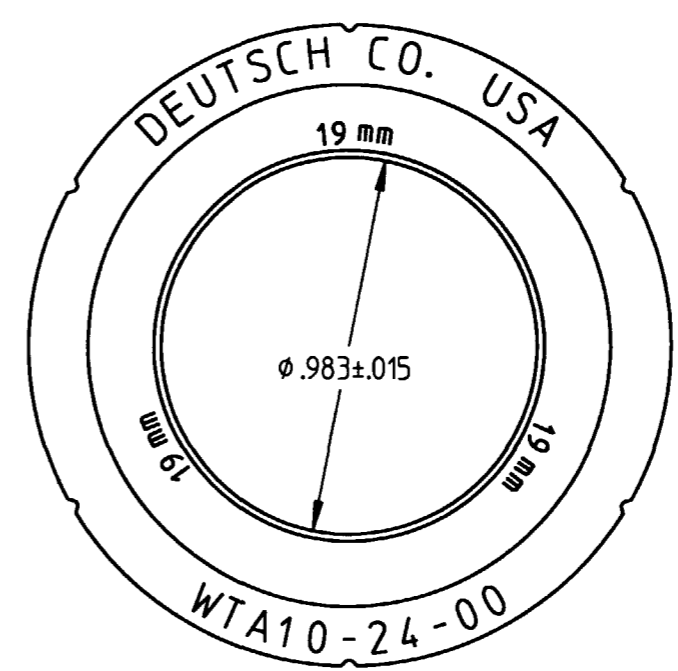
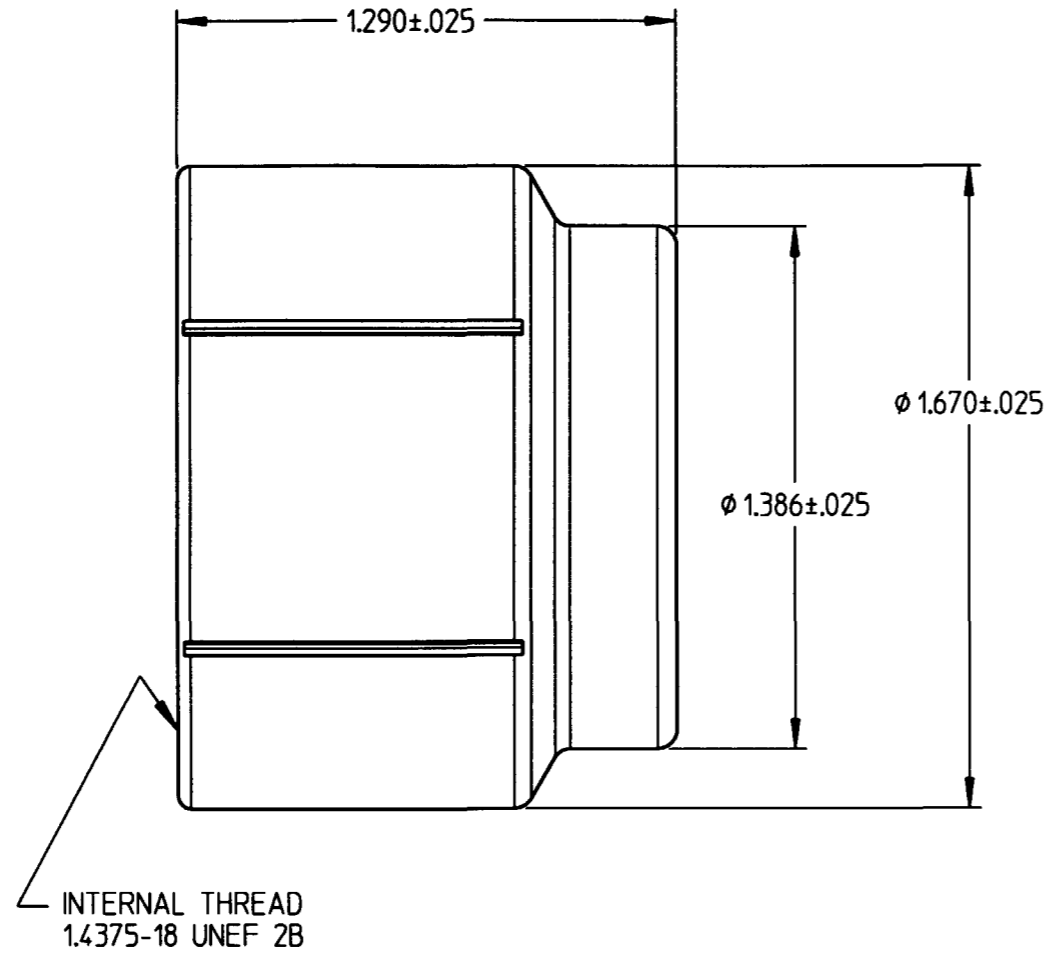


**PROPERTY OF DEUTSCH E.C.D.**  
 This drawing contains proprietary information that shall not be disclosed, duplicated,  
 nor used in whole or in part for any purpose other than to evaluate this drawing.

B	0805-201-2401	REVISIONS			
		REV	DESCRIPTION	DATE	APPROVED
		B	REVISED PER E.O. D1125	2/17/95	S.H.



4. ALLISON PART NUMBER WTA10-24-01/19 REF.
3. COUPLING NUT IS FOR 19 MM SPLIT CONVOLUTED TUBING.
2. MATERIAL: HIGH GRADE PLASTIC (BLACK).
1. ALL DIMENSIONS ARE IN INCHES UNLESS OTHERWISE SPECIFIED.

SIGNATURE & DATE	
DR	R. GROSS 11-1-94
CHK	J.P. 11/9/94
PE	R. Gross 11-1-94
APPD	AM
SCALE	NONE
WT	1

**COUPLING NUT**  
 ALLISON WTA10-24-00/19  
 BACKSHELL SYSTEM  
 SIZE 24  
 FOR 19 MM TUBING  
 ENVELOPE

CP		MATL CODE	
<b>DEUTSCH</b> ENGINEERED CONNECTING DEVICES			
5733 W. Whittier Ave. Hemet, California			
<b>A</b>	0805-201-2401	CODE 1139	SHEET 1 OF 1

0805-201-2401.dwg