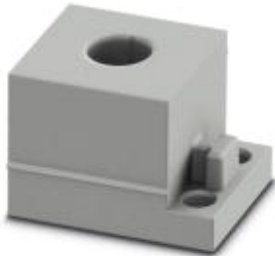


## Cable sleeve - CES-STPG-GY-11 - 0801683

Please be informed that the data shown in this PDF Document is generated from our Online Catalog. Please find the complete data in the user's documentation. Our General Terms of Use for Downloads are valid (<http://phoenixcontact.com/download>)



Small, slotted cable sleeves suitable for cables with a diameter of 10 ... 11 mm, material: SEBS

### Product Description

Slotted sleeves for accommodating pre-assembled cables and lines with a diameter of 10 ... 11 mm, can be used in CES sealing frames. When fitted, the sleeves also ensure strain relief according to DIN EN 50262.



### Key Commercial Data

|                                      |          |
|--------------------------------------|----------|
| Packing unit                         | 1 pc     |
| Minimum order quantity               | 10 pc    |
| Weight per Piece (excluding packing) | 6.0 g    |
| Custom tariff number                 | 85472000 |
| Country of origin                    | Poland   |

### Technical data

#### Dimensions

|                         |                    |
|-------------------------|--------------------|
| External cable diameter | 1x 10 mm ... 11 mm |
| Length                  | 29.5 mm            |
| Width                   | 19.5 mm            |
| Height                  | 17 mm              |

#### Ambient conditions

|                                 |   |
|---------------------------------|---|
| Degree of protection            | IP54 (for sealing frames with screw locking. IP44 sealing frames with locking latch.) |
| Ambient temperature (operation) | -40 °C ... 80 °C (static)   |

#### General

|                     |  |
|---------------------|--|
| Product description | Slotted sleeves for accommodating pre-assembled cables and lines with a diameter of 10 ... 11 mm, can be used in CES sealing frames. When fitted, the sleeves also ensure strain relief according to DIN EN 50262. |
|---------------------|--|

# Cable sleeve - CES-STPG-GY-11 - 0801683

## Technical data

### General

|  |      |
|--|------|
| No. of conductors                      | 1    |
| Material                               | SEBS |
| Flammability rating according to UL 94 | V0   |
| Color                                  | gray |

### Standards and Regulations

|  |     |
|--|-----|
| Connection in acc. with standard       | CUL |
| Flammability rating according to UL 94 | V0  |

## Classifications

### eCl@ss

|            |          |
|------------|----------|
| eCl@ss 4.0 | 27081002 |
| eCl@ss 4.1 | 27081002 |
| eCl@ss 5.0 | 27081002 |
| eCl@ss 5.1 | 27081002 |
| eCl@ss 6.0 | 27081002 |
| eCl@ss 7.0 | 27081002 |
| eCl@ss 8.0 | 27069220 |

### ETIM

|          |          |
|----------|----------|
| ETIM 3.0 | EC000879 |
| ETIM 4.0 | EC000451 |
| ETIM 5.0 | EC000451 |

### UNSPSC

|               |          |
|---------------|----------|
| UNSPSC 6.01   | 30212109 |
| UNSPSC 7.0901 | 39121708 |
| UNSPSC 11     | 39121708 |
| UNSPSC 12.01  | 39121708 |
| UNSPSC 13.2   | 39121708 |

## Approvals

### Approvals

---

### Approvals

UL Recognized / cUL Recognized / GL / cULus Recognized

# Cable sleeve - CES-STPG-GY-11 - 0801683

## Approvals

Ex Approvals

Approvals submitted

## Approval details

UL Recognized

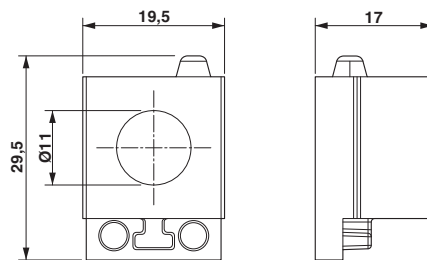
cUL Recognized

GL

cULus Recognized

## Drawings

Dimensional drawing



Dimensional drawing