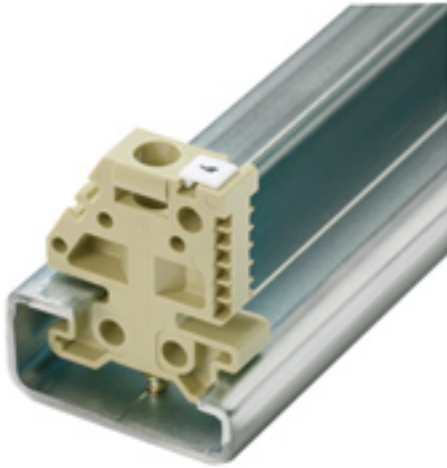


**Accessories**  
**EWK 1**

**Weidmüller Interface GmbH & Co. KG**  
Klingenbergstraße 26  
D-32758 Detmold  
Germany  
Fon: +49 5231 14-0  
Fax: +49 5231 14-292083  
www.weidmueller.com

**Product image****Klippon® Connect with clamping yoke Technology**

The high reliability and variety of designs of the terminal blocks with clamping yoke connections make planning easier and optimises operational safety. Klippon® Connect provides a proven response to a range of different requirements.

**General ordering data**

Type	EWK 1
Order No.	<a href="#">0206 160000</a>
Version	Accessories, End bracket
GTIN (EAN)	4008 190080020
Qty.	50 pc(s).

Creation date September 6, 2020 8:35:31 AM CEST

Catalogue status 28.08.2020 / We reserve the right to make technical changes.

**Accessories**  
**EWK 1**

**Weidmüller Interface GmbH & Co. KG**  
 Klingenbergstraße 26  
 D-32758 Detmold  
 Germany  
 Fon: +49 5231 14-0  
 Fax: +49 5231 14-292083  
 www.weidmueller.com

**Technical data****Dimensions and weights**

Width	9 mm	Width (inches)	0.354 inch
Height	27 mm	Height (inches)	1.063 inch
Depth	31 mm	Depth (inches)	1.22 inch
Net weight	4.34 g		

**Temperatures**

Continuous operating temp., min.	-50 °C	Continuous operating temp., max.	100 °C
----------------------------------	--------	----------------------------------	--------

**Material data**

Material	Wemid	Colour	beige
UL 94 flammability rating	V-0		

**System specifications**

Version	For the terminals	Rail	TS 32
---------	-------------------	------	-------

**Additional technical data**

Installation advice	Direct mounting	Interlock	for screw fixing
Type of mounting	when screwed in		

**Dimensions**

TS 32 offset	13.5 mm
--------------	---------

**Classifications**

ETIM 6.0	EC001041	ETIM 7.0	EC001041
eClass 9.0	27-14-11-35	eClass 9.1	27-14-11-35
eClass 10.0	27-14-11-35	UNSPSC	30-21-18-01

**Approvals**

ROHS	Conform
------	---------

**Downloads**

Brochure/Catalogue	<a href="#">CAT 1 TERM 16/17 EN</a>
Engineering Data	<a href="#">EPLAN, WSCAD, Zuken E3.S</a>
Engineering Data	<a href="#">04520_EWK_1_DXF.dxf</a> <a href="#">STEP</a>
Product Change Notification	<a href="#">Technical Change EN</a> <a href="#">Technical Change DE</a>
User Documentation	<a href="#">StorageConditionsTerminalBlocks</a>